

8825 SW WHITE PINE LN

ML: 20644926



Prime Raleigh Park Location

\$519,000

4 BR+den | 2BA | 1930 SF | built 1961

Raleigh Park | Whitford | Beaverton

Lot: .38 acre | Taxes: \$4935

- Harwood throughout most of home
 - Remodeled kit and baths
- Flexible floorplan: MBR could be family room, Nursery could be den or office
 - Newer Milgard windows
 - 95% gas heat
- Oversize garage can accommodate 4 cars
 - Private fenced landscaped yard with garden area, dog run
- Convenient location, close to bus, shopping Near Raleigh Park, Library, pool, more
 - Washington County

Information not Guaranteed. Buyer to Verify



See FLOOR PLAN on reverse

PAT WEISS

GRI, CRS, SRES
Principal broker
Licensed Oregon Broker

503.680.5433

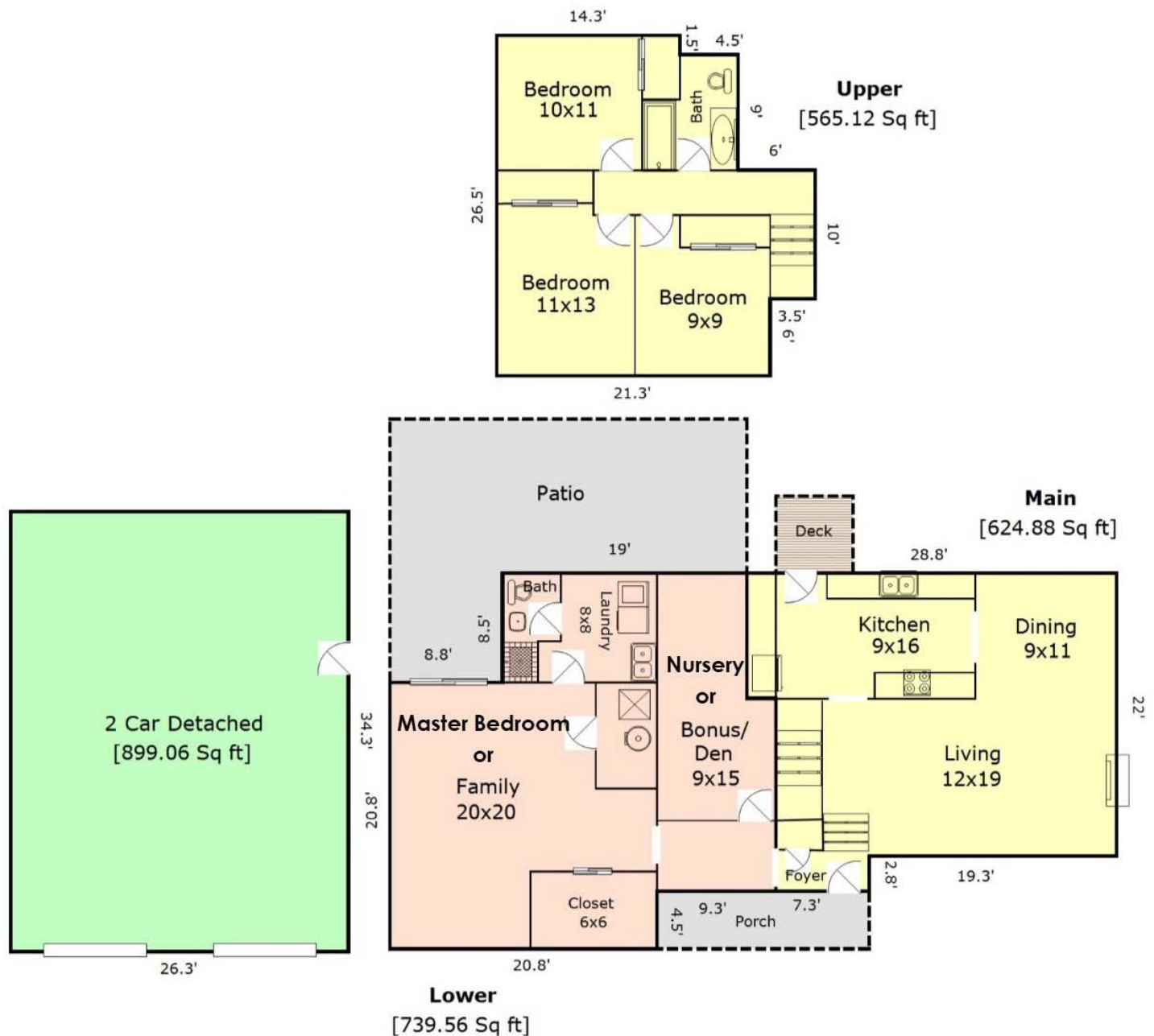
pat@domicilepdx.com

www.domicilepdx.com



DOMICILE PDX
REAL ESTATE GROUP
KELLER WILLIAMS REALTY PROFESSIONALS
Each office is independently owned and operated

FLOOR PLAN



Main + Upper + Lower = 1,930 Sq Ft

Sketch Prepared for Pat Weiss/DomicilePDX Real Estate Group
Measured on 03/11/2020

This sketch and the measurements shown herein, are approximations and are only provided for rough demonstrative purposes. The measurements are not guaranteed and should not be relied upon. If measurements are material to the reader, then the reader should independently measure the dimensions. This sketch is provided to the preparer's client along with various limitations and conditions that apply to this sketch and which should be reviewed along with this sketch. If a person other than the designated client uses the information herein (despite a prohibition on such use), then such person agrees to be subject to the same terms and limitations as the designated client. Separation of this tool from the sketch above will subject the separating party to liability.

Order floor plan drawing services at www.AQualityMeasurement.com

